





Diesel heaters



Silent

- The measured sound level of a Wallas is equivalent to a whisper in a library
- Laminar combustion assures neighbouring boats can also enjoy the silence of nature



Low Amps

- Low power consumption enables you to keep your boat warm even with a small battery capacity
- Wallas diesel heater produces the most heating power per single Watt of electricity in its class



Powerful

- Our high quality ventilation fans distribute the heat evenly and effectively



Reliable

- 3 year warranty for all our products
- To ensure highest quality, every single Wallas product is manually tested before delivery

The new elegant Wallas control panel includes the following functions:



Enjoy the feeling of warmth in your boat with Wallas diesel heaters. The Wallas PI – thermo control automatically adjusts the heat output to the correct level to keep the boat at just the right temperature.

- Intelligent, smooth, PI thermo power control
- Manual power adjustment option
- Last mode memory (thermo or manual)
- Two-step air boost function
- Fresh air ventilation
- Sun-switch (shuts unit off when not required)
- LED indicator lights
- Protection against accidental start and stop (child-safe)
- Flush mounted or surface mounted with bezel

New remote control system



See details in <http://remote.wallas.fi>

iOS, Android, BlackBerry, Symbian, Windows etc.

Proudly made in Finland



2.2 kW



3.0 kW



4.0 kW

Boat installation kit 3712 for 22 Dt



2448	exhaust pipe	1.5 m
2467	exhaust lead-through	1 pc
30011	fuel intake	1 pc
3410	warm air duct	6.5 m
3411	warm air grill	2 pcs

Boat installation kit 3713 for 30 Dt



2448	exhaust pipe	1.5 m
2467	exhaust lead-through	1 pc
30011	fuel intake	1 pc
3410	warm air duct	10 m
3411	warm air grill	2 pcs

Boat installation kit 3714 for 40 Dt



1028	exhaust pipe	1.5 m
1030	insulation sock for exh.	1.5 m
1066	exhaust lead-through	1 pc
30011	fuel intake	1 pc
3410	warm air duct	10 m
3411	warm air grill	3 pcs
3413	Y-divider	1 pc

Which heater do I need?

These heaters typically fit into following boat sizes:

22 Dt



6 - 9 m

30 Dt



9 - 12 m

40 Dt



9 - 15 m

However, please note that following factors may effect to the final selection of size:

- Length of the boating season (you start early in spring and stop late in autumn)
- Temperature of the waters you are boating (North Sea, Mediterranean etc.)
- Material of the boat (fiber glass, aluminum)
- Form of the hull (sailing boat, motor boat)
- Sizes of cabins and amount of bulkheads
- Size, number of windows
- Construction of the boat (closed construction or spaces covered with canvas)

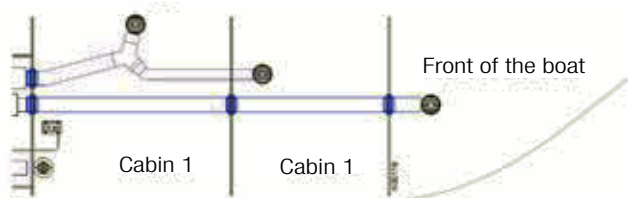
The effect of the factors can be simulated in the Wallas heater selector.

See the heater selector in
www.wallas.fi/heatersselector

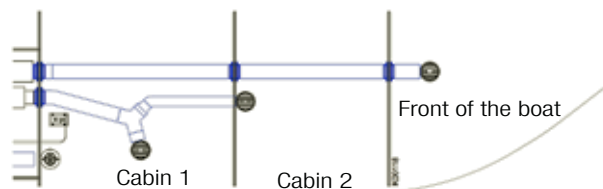


Diesel heaters

Air ducts 22 Dt 30 Dt



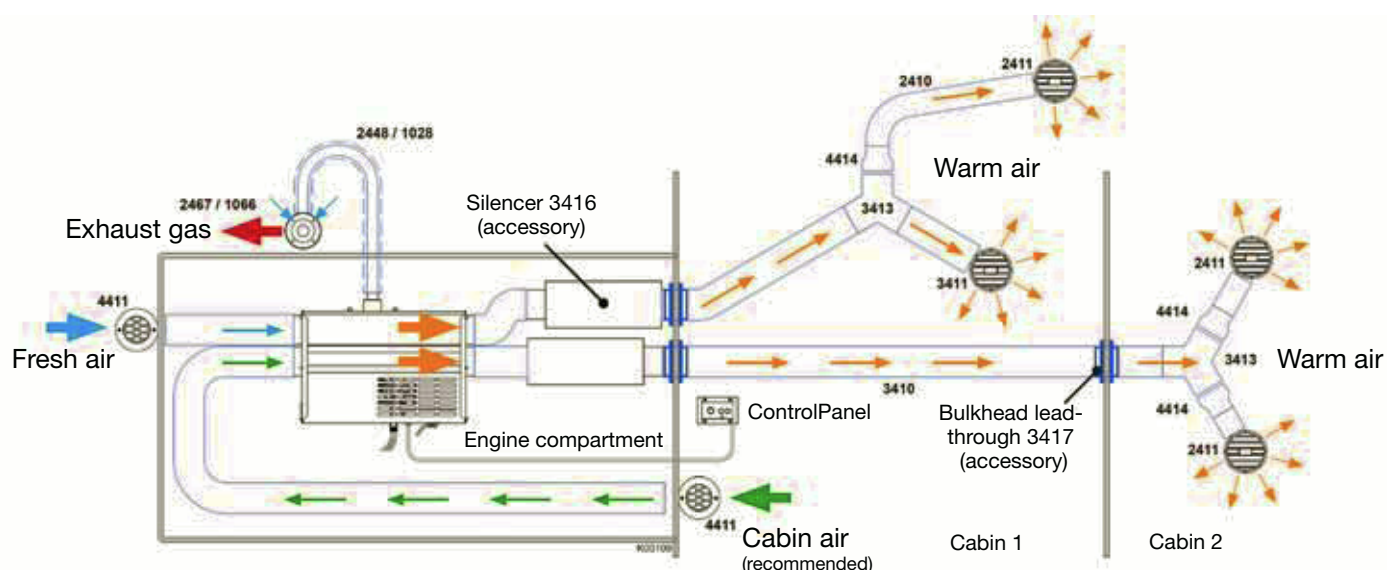
Air ducts 40 Dt



To ensure a proper air flow in a long duct to the front of the boat, it is useful to lead the hotter duct all the way to the front. The other duct and warm air vent can be sited accordingly.

Description of installation into the engine compartment

It is important to plan the proper routing of the duct and the locations of the warm air outlet vents. The heater should be located as near as possible to the area being heated.



Technical specifications

Model:	22 Dt	30 Dt	40 Dt
Fuel:	Diesel	Diesel	Diesel
Power:	1 kW - 2.2 kW	1 kW - 3 kW	1.5 kW - 4 kW
Operating voltage:	12 V	12 V	12 V
Fuel consumption:	0.1 - 0.2 l/h	0.1 - 0.3 l/h	0.2 - 0.4 l/h
Electricity consumption:	0.6 - 0.9 A	0.8 - 1.8 A	1.0 - 3.9 A
Heating air volume:	51 - 72 m³/h	60 - 96 m³/h	86 - 147 m³/h
Special features:	Fresh air vent	Fresh air vent	Fresh air vent

Paraffin/kerosene heaters



Compact

- Easy to install, because all essential parts are inside the body of the heater



Low Amps

- 0,4 A power consumption enables you to keep your boat warm even with small battery capacity
- Wallas 1300 is the smallest boat heater with the least power consumption



Silent

- Laminar combustion assures neighbouring boats can also enjoy the silence of nature



1.2 kW

Boat installation kit

3710 for 1300

2448	exhaust pipe	0,7 m
2467	exhaust lead-through	1 pc
2024	fuel tank 5 l	1 pc

Handy heater for smaller boats or spaces. Boat length recommendation 5 - 7 meters. See additional information in the Wallas heater selector in www.wallas.fi/heaterselector

A one meter warm air ducting kit (art.no 1332) available as accessory.

1332



Technical specifications

Model:	1300
Fuel:	Paraffin/kerosene
Power:	1200 W
Operating voltage:	12 V
Fuel consumption:	0.13 l/h
Electricity consumption:	0.4 A

Paraffin/kerosene heaters



Ideal for outboards

- Paraffin heaters 1800 t and 2400 t are ideal for boats with gasoline engines.
- Fuel consumption is so small that with a 5 l or 10 l tank, you'll heat your boat for several days



Low Amps

- Low power consumption enables you to keep your boat warm even with a small battery capacity
- Max power consumption of 1800 t is only 0,5 A!



Silent

- Laminar combustion assures neighbouring boats can also enjoy the silence of nature



1.7 kW



2.3 kW

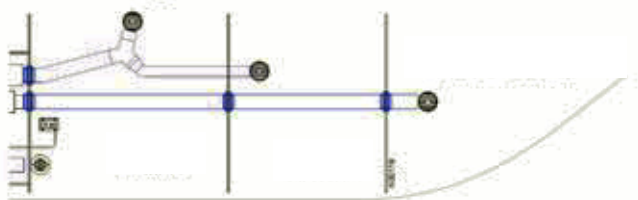


The new elegant Wallas control panel includes the following functions:



- Thermostatic adjustment
- Manual adjustment option
- Last mode's memory (thermostat or manual)
- Air boost function
- Fresh air ventilation
- Sun-switch (shuts down the device due to morning sunlight)
- LED background lights
- Protection against accidental start and stop (child-safe)

Air ducts



To ensure a proper air flow in a long duct to the front of the boat, it is useful to lead the hotter duct all the way to the front. The other duct and warm air vent can be sited accordingly.



Boat installation kit

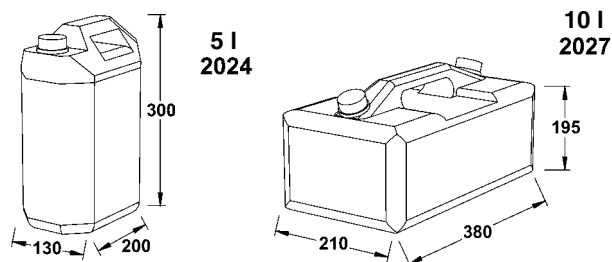
3711 for 1800 t / 2400 t

2448	exhaust pipe	1,5 m
2467	exhaust lead-through	1 pc
2027	fuel tank 10 l	1 pc
2410	warm air duct	6,5 m
2411	air grill	2 pcs

Technical specifications

Model:	1800 t	2400 t
Fuel:	Paraffin/ kerosene	Paraffin/ kerosene
Power:	950/1700 W	950/2300 W
Operating voltage:	12 V	12 V
Fuel consumption:	0.1 - 0.18 l/h	0.1 - 0.24 l/h
Electricity consumption:	0.35/0.5 A	0.5/1.3 A
Special features:	Fresh air vent	Fresh air vent

Fuel tanks



These heaters typically fit into following boat sizes:

1800 t



6 - 9 m

2400 t



6 - 10 m

The factors which effect to the need of capacity can be simulated in the Wallas heater selector.

See the heater selector in www.wallas.fi/heaterselector







Paraffin stove heater

800 t + 220



1.2 kW

This stove heater is ideal for hard top boats with one cabin. It can be a good additional heating source in bigger boats as well. Heating capacity is 1.2 kW.



Technical specifications

Model:	800 t + 220
Fuel:	Paraffin/kerosene
Power:	650 - 1200 W
Operating voltage:	12 V
Fuel consumption:	0.07 - 0.13 l/h
Electricity consumption:	0.15 (+0.4) A

1 + 1 = 1

Two products in one!

- 1) Thermostat controlled heater
- 2) Stove without open flame



The new elegant Wallas control panel includes the following functions:

- Intelligent, smooth, PI controlled thermostatic adjustment when used as a heater
- Manual adjustment when used as a stove
- Sun-switch (shuts down the device due to morning sunlight)
- LED background lights
- Protection against accidental start and stop (child-safe)
- Flush mounted or surface mounted with spacer

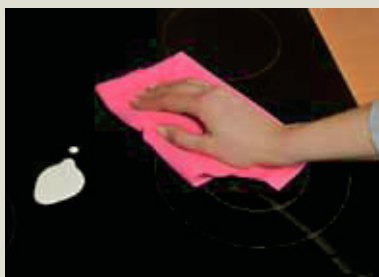
Diesel stove heater

85 Dt + 270



Safe

- No exposed flame means safety and no moisture added to the cabin.
- Non-explosive fuel



Easy to clean

- Even surfaces are easy to keep clean



1.9 kW

The stove heater 85 Dt + 270 (thermostatic version coming soon) has a classy two plate ceramic top with hot plate indication. Diesel fuel can be taken from the main tank of the boat. Heating capacity is as much as 1.9 kW.



Technical specifications

Model:	85 Dt + 270
Fuel:	Diesel
Power:	900 - 1900 W
Operating voltage:	12 V
Fuel consumption:	0.09 - 0.19 l/h
Electricity consumption:	0.19 (+0.4) A

Wallas stoves and ovens

85 DU



85 DP



86 D



87 D



Technical specifications



Model:	85 DU	85 DP	86 D	87 D
Fuel:	Diesel	Diesel	Diesel	Diesel
Power:	900 - 1900 W	900 - 1900 W	1000 - 2500 W	85D 900 - 1900 W 86D 1000 - 2500 W
Operating voltage:	12 V	12 V	12 V	12 V
Fuel consumption:	0.09 - 0.19 l/h	0.09 - 0.19 l/h	0.1 - 0.25 l/h	0.09 - 0.44 l/h
Electricity consumption:	≈ 0.19 A	≈ 0.19 A	≈ 1.6 A	≈ 1.6+0.19 A

90 t



88 DU



800 t



Technical specifications

Model:	800 t	90 t	88 DU
Fuel:	Paraffin/ kerosene	Paraffin/ kerosene	Diesel
Power:	650 - 1200 W	700 - 1800 W	700 - 1800 W
Operating voltage:	12 V	12 V	12 V
Fuel consumption:	0.07 - 0.13 l/h	0.08 - 0.19 l/h	0.08 - 0.19 l/h
Electricity consumption:	≈ 0.15 A	≈ 0.15 A	≈ 0.19 A





Manufacturer: Wallas-Marin Oy, Kärriykatu 4, FI-20780 Kaarina, Finland
Tel. +358 (0)2 412 0500, Fax. +358 (0)2 412 0510. www.wallas.com

